

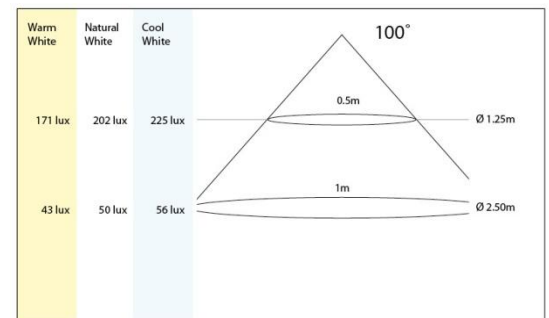
SLIMLINE LED spot - L04410

Features

The SLIMLINE LED spot is characterized by its wide beam angle. It is available in three LED colours: Warm white, natural White and Cool white.

Specifications

Input current	350mA or 700mA (max.)
Input power	2.3 Watt 700mA (max.)
Forward voltage	3.3V
Number of LEDs	1
LED type	Current
LED Expected lifetime	50.000hrs/70%
Approved drivers	Lumotech L05011iNS / L05013NS / L05016iNS / L05020NS / L05021NS (See website for more info)
Dimmable	Depends on the used driver
Ambient Temperature (Ta)	-20° C to +35° C
Available LED colours	Warm white / Natural white / Cool white
Default light angle	100°
Classifications	III, IP20, F
Case dimensions (Ø x H)	Ø 65 x 13.7 mm
Built in size (Ø)	Ø 62 mm
Case material	Anodized aluminium
Case colours	Aluminium
Case weight	47.5 gram
Max. case temperature	70°
Storage temperature	-20° to +50° C
Lead connection method	Lumoluce "Click & Go" connector system
Approvals	CE

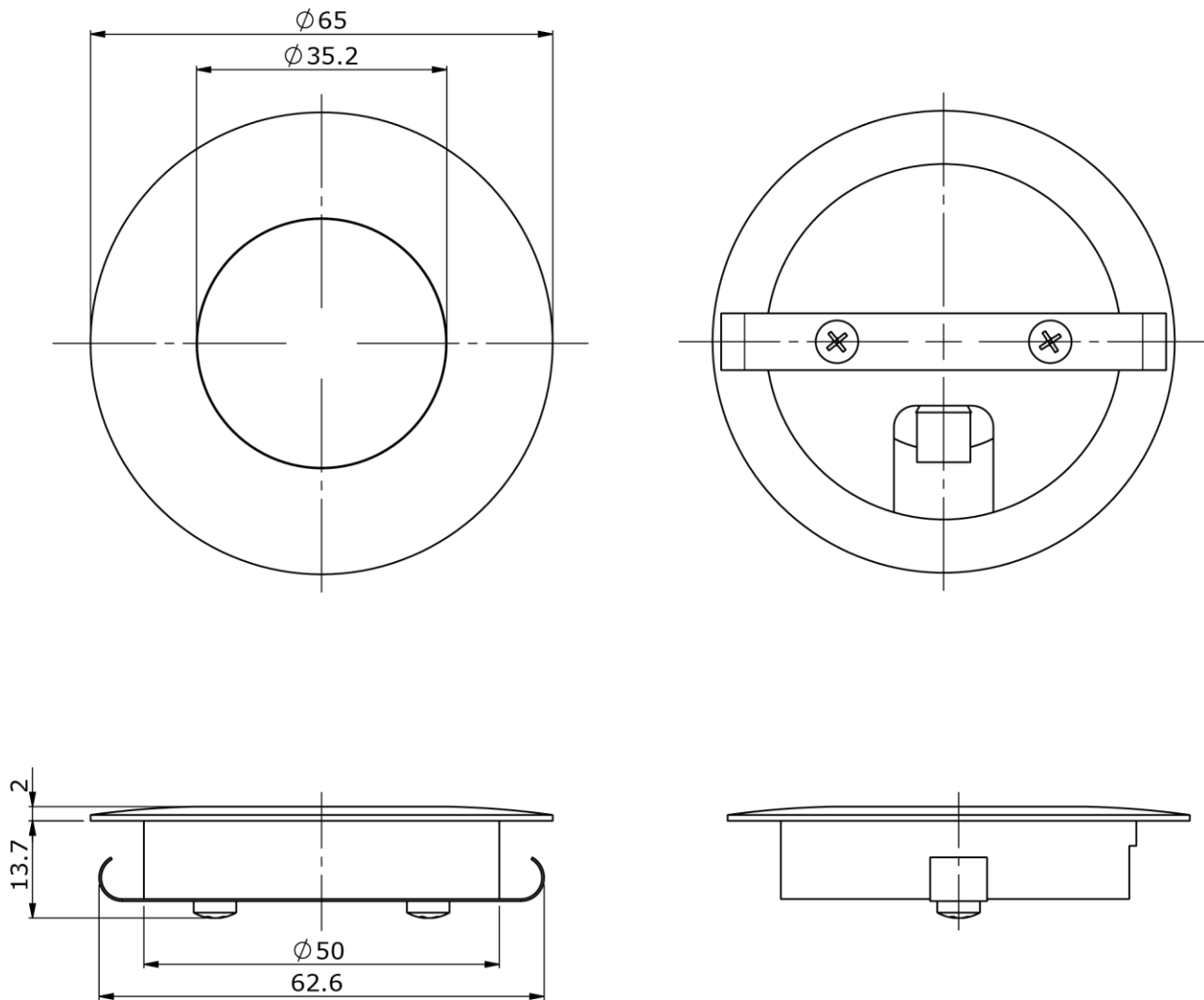


Notes

The lifetime durability of the SLIMLINE LED spot depends on the ambient temperature! Never mount the SLIMLINE LED spot in direct sunlight or near a heat source. Mount the SLIMLINE LED spot only in a properly ventilated place.

The photometric information for each product is available for download with an .ldt file extension, allowing the data to be imported into most light building software packages.

Technical drawings



Order

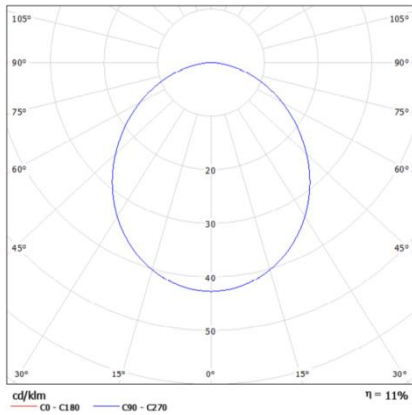
SLIMLINE LED spot - L04410 Warm white – Alu case	L04410WW
SLIMLINE LED spot - L04410 Natural white – Alu case	L04410NW
SLIMLINE LED spot - L04410 Cool white – Alu case	L04410CW

Disclaimer

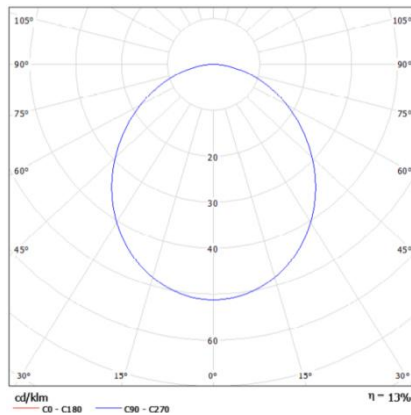
©2011, Lumoluce B.V. All rights reserved. Designs and specifications may change without prior notice.

Photometric specifications

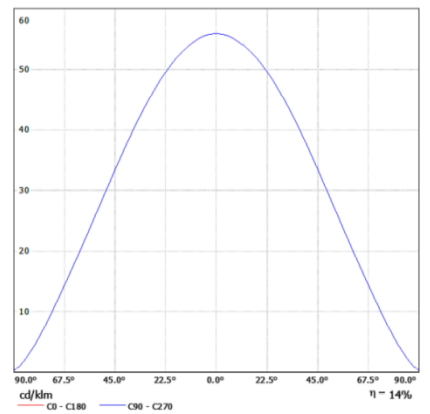
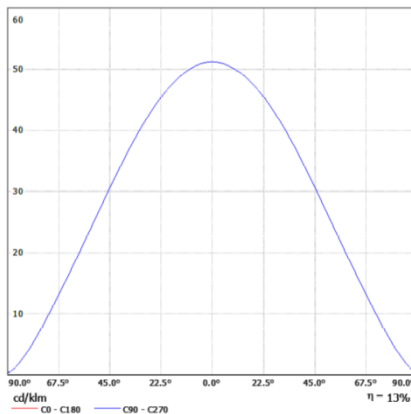
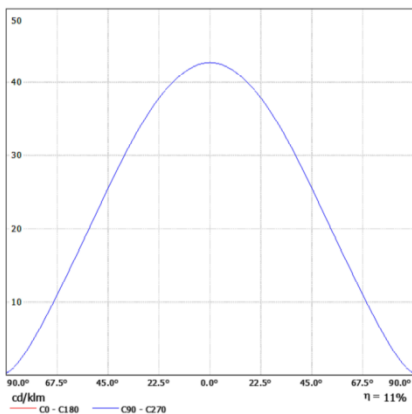
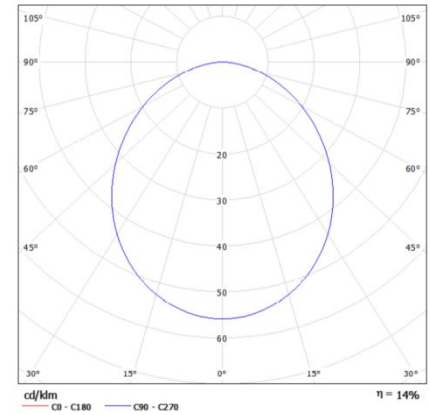
Warm White



Natural White



Cool White



Risk categories of photobiological safety (found per IEC-62471)

- Actinic UV: Exempt **
- Near UV: Exempt **
- Retinal Thermal: Exempt **
- Blue-Light: RG-2 (Moderate Risk): CAUTION! Do not stare at exposed lamp in operation. May be harmful to eyes.
- Cirbea/Lens, IR: Exempt **

** The spot normally has no emissions in the wavelength range of the listed risk category.